

TERRACE TOWN | TEACHER + MENTOR KICKOFF | 01.13.2026

IMAGE + PROJECT: AYRES ASSOCIATES

# LANDSCAPE ARCHITECTURE

UNDERSTANDING THE PROFESSION  
BEHIND THE OUTDOOR PLACES WE SHARE

**PAIGE BERNHARDT** LANDSCAPE ARCHITECT | AYRES ASSOCIATES  
**ABBIE MOILIEN** MANAGING PRINCIPAL + LANDSCAPE ARCHITECT | SAIKI DESIGN, INC



**ASLA**  
WISCONSIN



IMAGE + PROJECT: JAMES CORNER FIELD OPERATIONS



# HIGH LINE

NEW YORK CITY, NEW YORK

THIS IS LANDSCAPE ARCHITECTURE





# LITTLE ISLAND

NEW YORK CITY, NEW YORK

IMAGE + PROJECT: MATHEWS NIELSEN LANDSCAPE ARCHITECTS



THIS IS LANDSCAPE ARCHITECTURE



IMAGE + PROJECT: GGN / CATHERINE TIGHE



# LURIE GARDEN

CHICAGO, ILLINOIS

THIS IS LANDSCAPE ARCHITECTURE





# TITLETOWN PLAZA

GREEN BAY, WISCONSIN

IMAGE + PROJECT: DESIGN WORKSHOP



THIS IS LANDSCAPE ARCHITECTURE



IMAGE + PROJECT: SAIKI DESIGN, INC.



# STATE STREET

MADISON, WISCONSIN

THIS IS LANDSCAPE ARCHITECTURE





IMAGE + PROJECT: AYRES ASSOCIATES

# WHAT IS LANDSCAPE ARCHITECTURE?

Landscape architects plan and design **healthy, safe, and resilient** outdoor spaces for all. As **STEM** professionals, they blend **science** and **creativity** to enhance our communities, making them **vibrant places** to live, work, and play. From small towns to the largest cities, landscape architects engage with communities to **create cherished spaces**.



IMAGE + PROJECT: AYRES ASSOCIATES

# LICENSURE + RESPONSIBILITY

LICENSURE IS REQUIRED IN ALL 50 STATES

DEGREE FROM  
AN ACCREDITED  
INSTITUTION

+

SUPERVISED  
EXPERIENCE IN A  
PROFESSIONAL SETTING

+

FOUR PART  
NATIONAL  
LICENSING EXAM

Landscape architects protect the public health, safety, and welfare within the landscape.



A wide-angle photograph of a modern playground under a clear blue sky with scattered white clouds. The playground features a large, complex play structure on the left with green and yellow panels and slides. Several tall, curved poles in red, green, and blue rise from the ground. In the foreground, there's a red rubber safety mat with green circular patterns. To the right, there's a blue rubber mat and a set of blue climbing poles. Children are seen playing on various parts of the equipment. In the background, there are trees with some autumn-colored leaves and a black metal fence.

IMAGE + PROJECT: AYRES ASSOCIATES

# WHY LANDSCAPE ARCHITECTURE MATTERS FOR EDUCATION

Outdoor environments function as powerful learning spaces, and when they are intentionally designed, they support physical activity, mental well-being, social connection, and a sense of safety and belonging, **shaping how students behave, interact, and feel in the places they share.**





IMAGE + PROJECT: SAIKI DESIGN, INC.

# AREAS OF PRACTICE

A GLIMPSE INTO THE MANY TYPES OF WORK

OUTDOOR RECREATION  
SPACES



TRANSPORTATION  
NETWORKS



RESILIENT  
COMMUNITIES





IMAGE + PROJECT: SAIKI DESIGN

# OUTDOOR RECREATION SPACES

Designing parks, trails, and community gathering areas that support health, connection, and access to nature for all.

- Campuses and outdoor learning environments
- Dog parks and pet friendly recreation areas
- Nature preserves and open space systems
- Playgrounds and inclusive play areas
- Sports fields and athletic complexes
- Trails, greenways, and multi use paths
- Waterfront parks and riverwalks





IMAGE + PROJECT: SAIKI DESIGN

**RELEVANCE:**

Support physical, mental, and social health by creating places for play, gathering, and community connection. In school settings, these spaces extend the classroom, shaping movement, inclusion, and social interaction while providing opportunities for outdoor learning.

# OUTDOOR RECREATION SPACES

Designing parks, trails, and community gathering areas that support health, connection, and access to nature for all.

- Campuses and outdoor learning environments
- Dog parks and pet friendly recreation areas
- Nature preserves and open space systems
- Playgrounds and inclusive play areas
- Sports fields and athletic complexes
- Trails, greenways, and multi use paths
- Waterfront parks and riverwalks



A nighttime photograph of a city street. The scene is illuminated by warm white string lights strung across the street and by streetlights. In the foreground, a black bicycle is parked on a metal bike rack on a paved sidewalk. To the left of the bike rack are several black, rectangular bollards with white geometric patterns. In the background, there are multi-story buildings with lit windows and a few people walking on the sidewalk. A 'No Parking' sign is visible on a pole near the sidewalk.

IMAGE + PROJECT: SAIKI DESIGN

# TRANSPORTATION NETWORKS

Creating safe, efficient, and people-centered systems for moving through communities, from sidewalks and bike lanes to transit corridors.

- Complete streets and multi modal corridors
- Intersection redesigns and safety improvements
- Mobility hubs (bike share, scooters)
- Protected bike lanes
- Traffic-calming and safety projects
- Transit stop and station-area improvements
- Wayfinding and multi modal signage systems





IMAGE + PROJECT: SAIKI DESIGN

**RELEVANCE:**

Improve safety and accessibility while encouraging walking and biking and reducing environmental impacts. These networks support Safe Routes to School, strengthen walkability around campuses, and help students build civic awareness through everyday movement and observation.

# TRANSPORTATION NETWORKS

Creating safe, efficient, and people-centered systems for moving through communities, from sidewalks and bike lanes to transit corridors.

- Complete streets and multi modal corridors
- Intersection redesigns and safety improvements
- Mobility hubs (bike share, scooters)
- Protected bike lanes
- Traffic-calming and safety projects
- Transit stop and station-area improvements
- Wayfinding and multi modal signage systems



An aerial photograph of a modern park. A winding stream flows through a green landscape. A paved path curves around the stream. In the foreground, there is a small building with a blue roof and a person walking. The background shows a city skyline with various buildings and a bridge.

IMAGE + PROJECT: SAIKI DESIGN

# RESILIENT COMMUNITIES

Shaping landscapes that manage water, reduce risk, and strengthen a community's ability to adapt to climate and environmental challenges.

- Coastal resilience and living shorelines
- Drought-tolerant and water-wise landscapes
- Brownfield remediation and redevelopment
- Green infrastructure, bioswales, and rain gardens
- Heat-mitigation landscapes and shade networks
- Wetland restoration and habitat repair
- Wildfire-resilient landscape planning





IMAGE + PROJECT: SAIKI DESIGN

# RESILIENT COMMUNITIES

## RELEVANCE:

Planning for future climate uncertainty. These projects strengthen climate literacy, encourage stewardship of local environments, and build long-term thinking and problem-solving skills that help kids understand how their choices and surroundings shape a more resilient community.

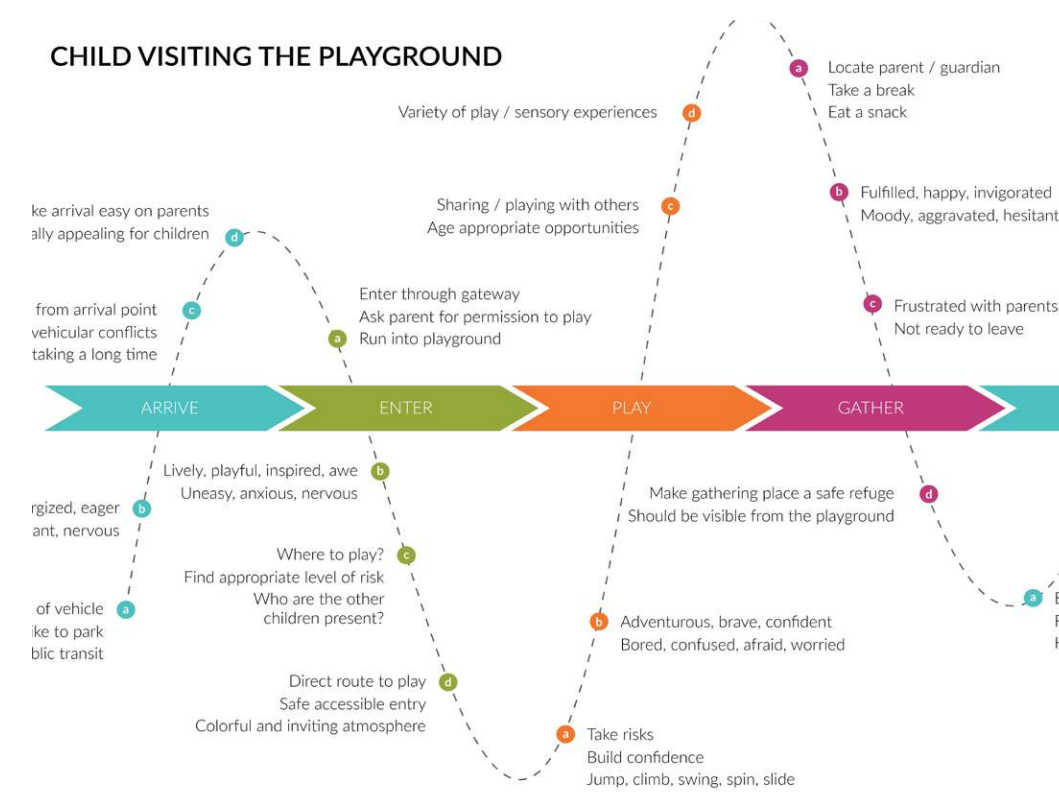
Shaping landscapes that manage water, reduce risk, and strengthen a community's ability to adapt to climate and environmental challenges.

- Coastal resilience and living shorelines
- Drought-tolerant and water-wise landscapes
- Brownfield remediation and redevelopment
- Green infrastructure, bioswales, and rain gardens
- Heat-mitigation landscapes and shade networks
- Wetland restoration and habitat repair
- Wildfire-resilient landscape planning



# SKILLS + PROCESS

Landscape architects use a blend of analytical, creative, and technical skills to move projects from concept to construction.



## RESEARCH + ANALYSIS

Understanding sites, ecosystems, data, and community needs.

## COMMUNITY ENGAGEMENT

Listening, collaborating, and incorporating diverse voices.

## ITERATIVE DESIGN

Exploring ideas, testing alternatives, and refining solutions.

## CONSTRUCTION DOCUMENTATION + ADMINISTRATION

Translating designs into buildable plans and guiding projects through completion.





# CAREER DISCOVERY

K-12 LEARNING TOOLS AND RESOURCES ARE AVAILABLE THROUGH THE AMERICAN SOCIETY OF LANDSCAPE ARCHITECTS (ASLA).

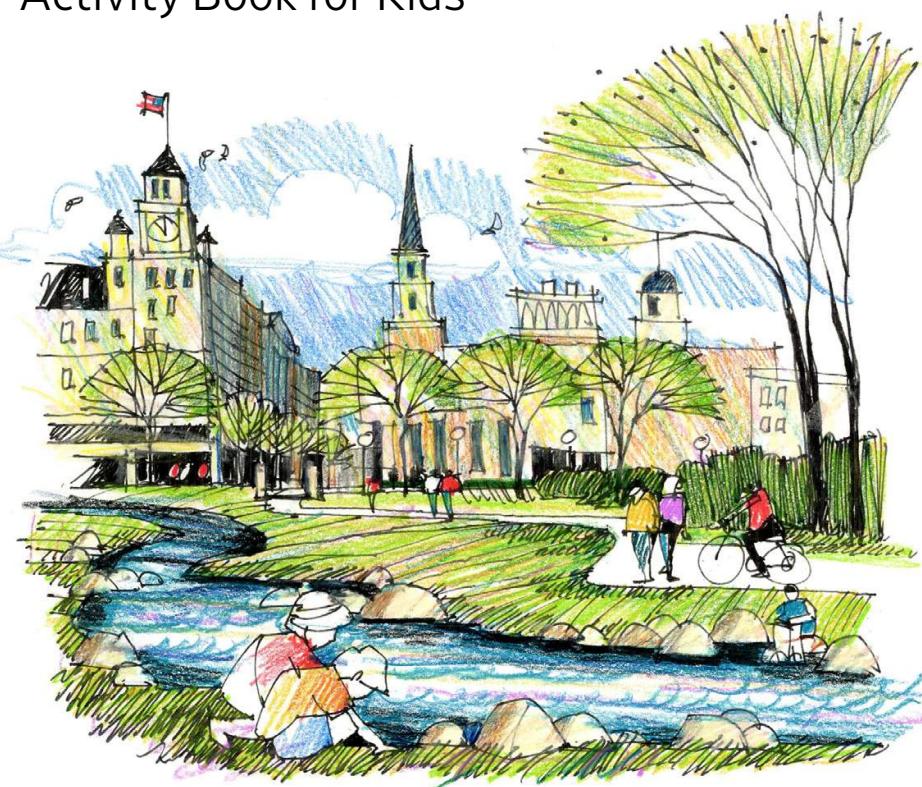


[asla.org/become-a-la/career-discovery](https://asla.org/become-a-la/career-discovery)

ASLA  
DISCOVER  
LANDSCAPE  
ARCHITECTURE  
Activity Book for Kids



ASLA  
DISCOVER  
LANDSCAPE  
ARCHITECTURE  
Activity Book for Kids



American Society of  
Landscape Architects



yards in Bloom

Grades K-5



Sustainable Landscapes  
Case Studies

Grades 9-12



ASLA  
DREAM BIG  
with Design



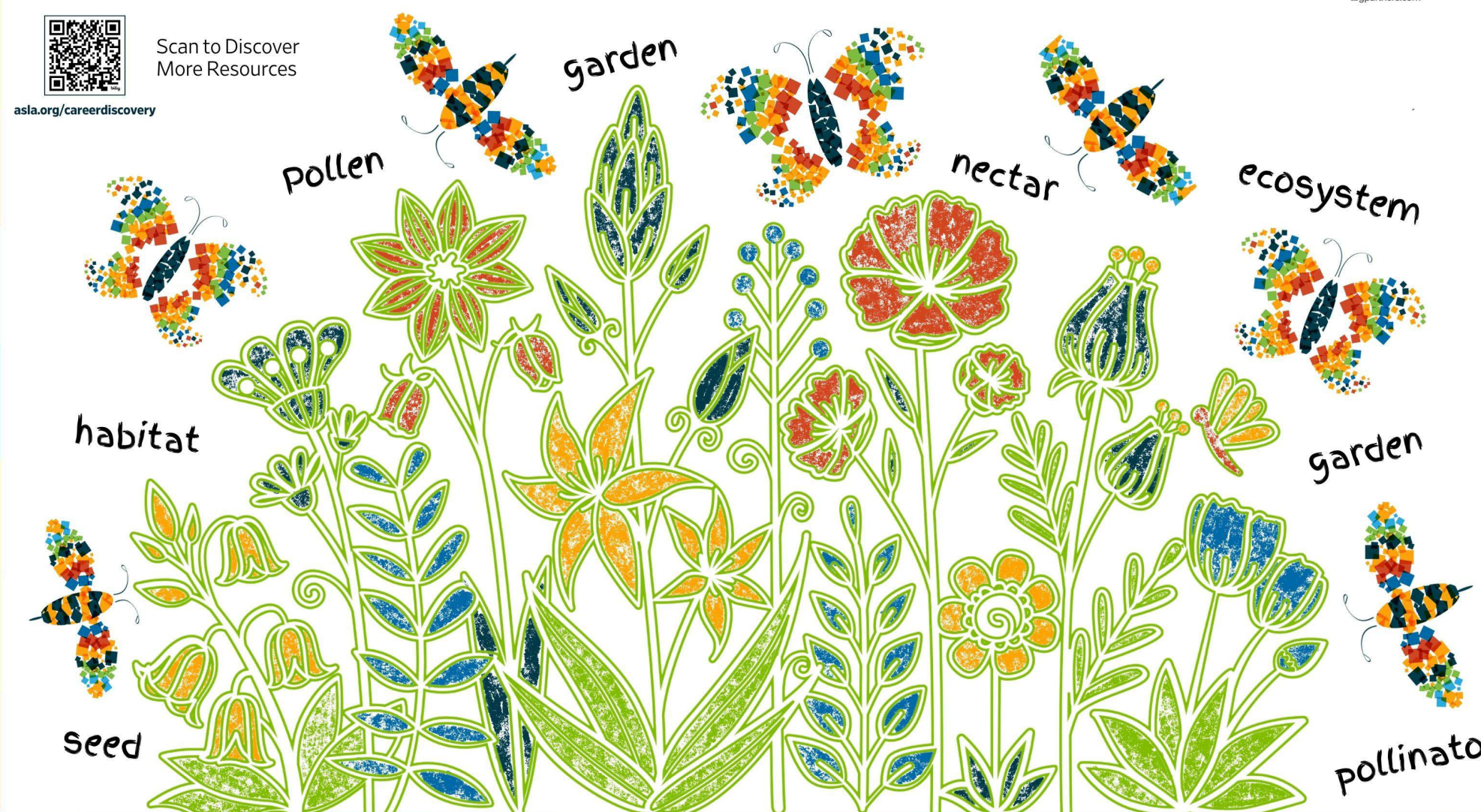
[asla.org/careerdiscovery](https://asla.org/careerdiscovery)

Scan to Discover  
More Resources

Schoolyards in Bloom  
Grades K-5



TBG  
landscape  
architecture,  
planning &  
urban design  
[tbgpartners.com](https://tbgpartners.com)



Grades 6-12

Grades 9-12

Copyright © 2025 The American Society of Landscape Architects. All Rights Reserved





# COLLAGE ACTIVITY

This activity was designed to encourage kids to think like a landscape architect. In the process, they were able to select images to create their "award winning" park.

4 People are not the only ones who will enjoy your park. What animals or insects might you see?  
(ex: squirrel, rabbit, bird, bee, butterfly, deer, bear, fish, frog)



SET THE SCENE  
1 Where will your park be located?  
(ex: city, forest, lakefront, schoolyard)

2 How will people get to the park?  
(ex: car, bicycle, scooter, skateboard, bus, foot)



## DESIGN A PARK COLLAGE

Imagine you are a **Landscape Architect** designing the most exciting new park in Wisconsin! Think about the following questions carefully as you create your vision for the park.

**Grab 1-2 images as you answer each question.** At the end, you will have all the materials you need to collage your award winning park masterpiece!



TERRACE TOWN OPEN HOUSE 2024



# DESIGN A PARK

## COLLAGE ACTIVITY

**Imagine you are a Landscape Architect** designing the most exciting new park in Wisconsin! Think about the following questions carefully as you create your vision for the park.

**Grab 1-2 images as you answer each question.** At the end, you will have all the materials you need to collage your award winning park masterpiece!





# SET THE SCENE

## COLLAGE ACTIVITY

**Where will your park be located?** (city, forest, lakefront, schoolyard)

**How will people get to the park?** (foot, bicycle, car, scooter, skateboard, bus)

**Who will you take with you to the park?** (parent, guardian, grandparent, sibling, friend, dog)

**People are not the only ones who will enjoy your park. What animals or insects might you see?** (squirrel, rabbit, bird, bee, butterfly, deer, bear, fish, frog)





# CREATE A PLAN

## COLLAGE ACTIVITY

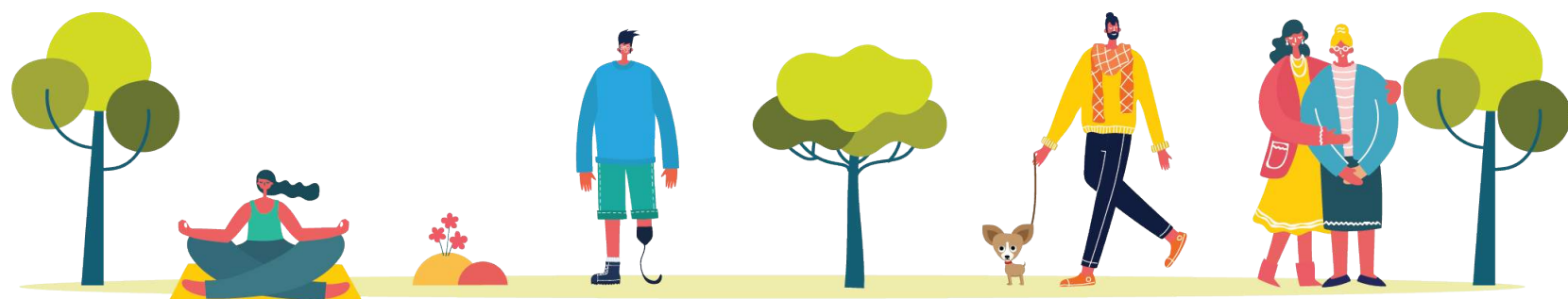
**When people visit the park, where will they play?** (playground, open lawn, beach, skate park)

**Will there be a place to splash?** (splash pad, pool, beach)

**What about a place to climb?** (rock wall, rope structure, nature play logs)

**When they get tired, where will they relax?** (under a tree, on a bench, in a hammock, on a picnic blanket)

**Your park will be such a hit that there will be big events there. What will they be?** (sports games, music nights, movies in the park, farmers markets)





# BUILD YOUR PARK

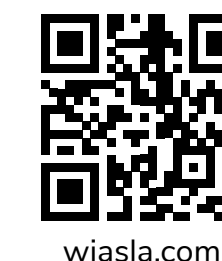
Create your collage with all your park pictures.  
Use markers, stamps, and stickers to decorate.

Before your park opens, you must think of a name! **What is your park called?**

**Imagine you are a Landscape Architect** and you have just designed the most exciting new park in Wisconsin. Everyone in the community is so happy and they love playing there. **Write 3 words to describe your park.**







ASLA  
WISCONSIN

## CONTACT US:

WISCONSIN ASLA

EMAIL: [admin@wiasla.com](mailto:admin@wiasla.com)

“

**Landscape architects** shape the outdoor environments where learning happens every day. Educators and landscape architects share a commitment to creating places where people can thrive. **When we design outdoor spaces with intention, we support learning, curiosity, and well-being far beyond the classroom.**